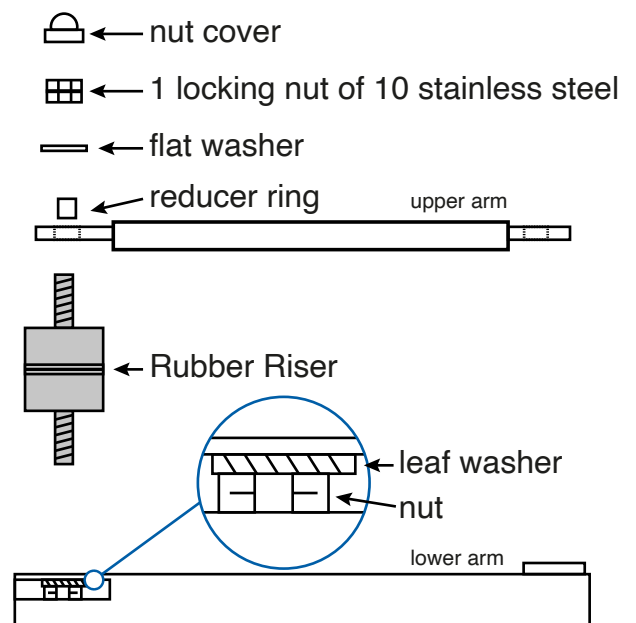


RUBBER RISER

Installation

- 1- Remove the cotter pin or the elastic ring
- 2- mount the Rubber Riser on the lower arm and fix it firmly (it shouldn't move)
- 3- insert the reducer ring on the upper arm with a hammer, if needed
- 4- set the upper arm on the Rubber Riser
- 5- insert the flat washer
- 6- put the first on nut leaving some mechanical interplay to allow movement
- 7- block the second nut so that the first one cannot unscrew
- 8- put the nut cover on

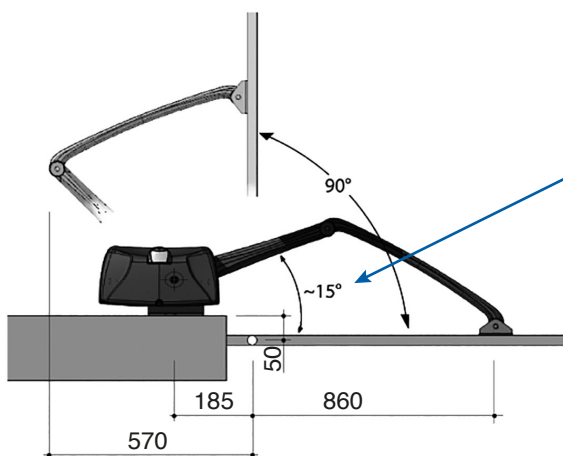


Adjust the working time to the minimum necessary.

In order not to deform the Rubber Riser, set the operator minimum force and eventually increase it until you find the right solution for both strain and deformation.

Set the lowest working time.

For SWINGER, set the end of the stroke so that the strain isn't too much.



ATTENTION

Anti-crushing distance

Be careful to respect the 15 degrees of angle for LIVI 502 and SWINGER operators

maximum size for the LIVI 502 leaf = 2m
maximum size for the SWINGER leaf = 1.7m